

CL Steam Series

Efficient
Oil-Fired
Cast Iron Boiler

- **Up to 86.4% AFUE**
- **68 to 173 Net BTUs**
 - In 6 sizes
- **Chimney vented**
- **Cast iron heat exchanger**
 - Wet base design
- **Tankless coil available**
 - For domestic hot water
- **Metal section connectors**
 - Resistant to chemicals, offer increased boiler longevity
- **Designed for ease of service**
 - Swing-away cast iron door provides easy access to combustion chamber
- **Lifetime limited warranty**
 - See your installing contractor for more warranty information



New Yorker[®]
RESIDENTIAL HEATING BOILERS

MADE IN

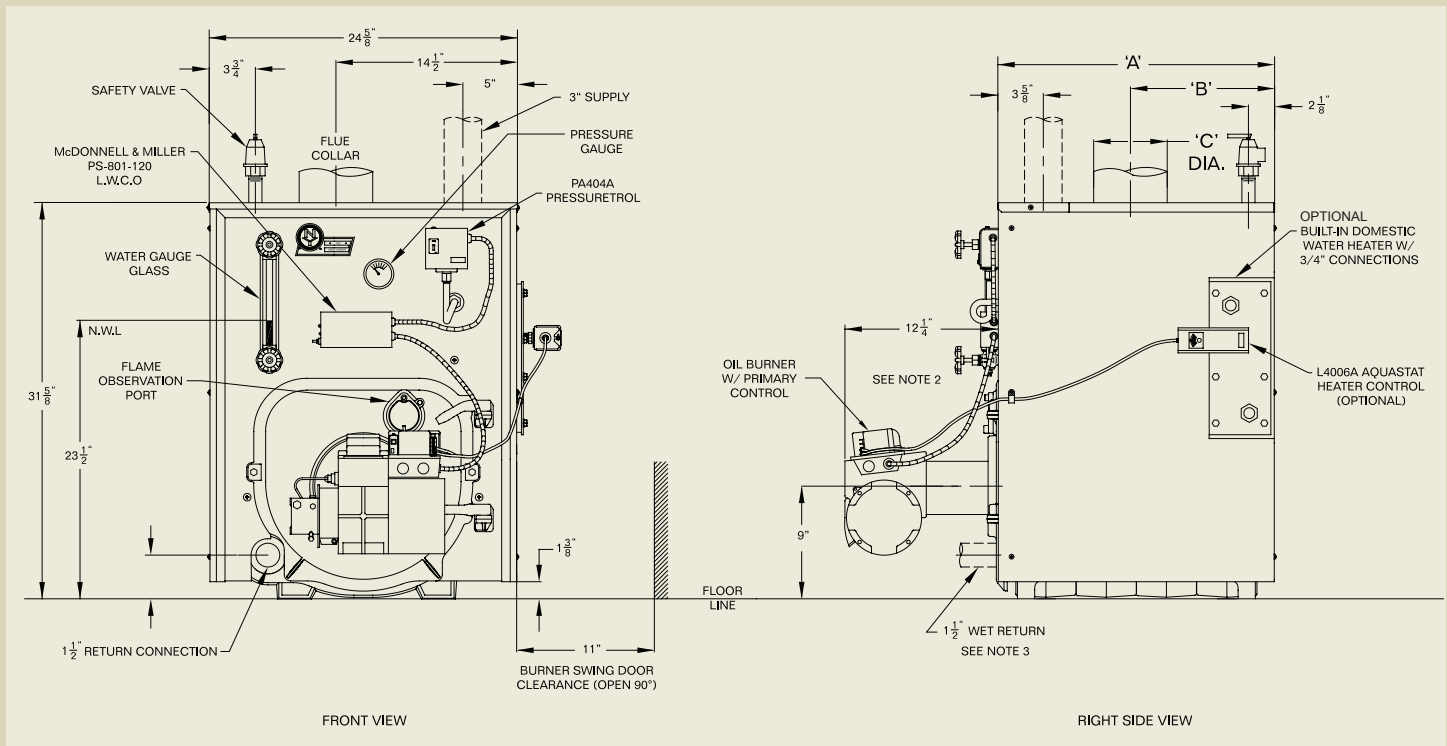
U . S . A .

Ratings, Specifications, & Dimensions

Model	DOE Heating Capacity (MBH)	AHRI Net Steam (MBH)	AHRI Net Steam (sq.ft.)	Burner Capacity (GPH)	AFUE (%)	Minimum Chimney Req.	Tankless Heater (GPM)	Jacket Depth 'A'	Jacket Rear to Center of Flue 'B'	Flue Collar Dia. 'C'	Approx Ship Wt. (lbs.)
CL3-105SE	91	68	284	0.75	85.7	8" x 8" x15'	3.00	17-3/8"	8-1/4"	6"	570
CL3-140SE	121	91	378	1.00	85.0	8" x 8" x15'	3.25	17-3/8"	8-1/4"	6"	570
CL4-168SE	147	110	459	1.25	86.4	8" x 8" x15'	3.75	22-3/8"	10-7/8"	7"	690
CL4-210SE	181	136	566	1.50	85.1	8" x 8" x15'	4.00	22-3/8"	10-7/8"	7"	690
CL5-245SE	212	159	663	1.75	85.6	8" x 8" x15'	4.25	27-3/8"	13-3/8"	8"	810
CL5-266SE	230	173	719	2.00	85.3	8" x 8" x15'	4.75	27-3/8"	13-3/8"	8"	810

Standard Features

- Fully packaged
- Beckett AFG oil burner
- Beckett GeniSYS primary control
- Electronic ignitor 14KV
- 1-1/2" return connection
- 3" supply connection
- Metal section connectors
- Gauge glass set
- Vertical flue design
- Probe type LWCO
- Pressuretrol
- 15 lb. relief valve



Notes:

- Tankless coil opening not present on less-coil boilers
- Piping shown hidden not furnished with boiler
- Drain valve shipped loose (not shown)



© 2020 New Yorker Boiler Company, Inc, Lancaster, PA
 info@newyorkerboiler.com
 www.newyorkerboiler.com
 PL81420101007 - 9/20 - 2.5Ms

